

Hepatitis C Pilot

About hepatitis C:

Why should hepatitis C (HCV) be addressed?

- Approximately 50,000 New Zealanders live with chronic hepatitis C.
- Only 25% have been diagnosed.
- HCV is one of the leading causes of liver cancer and liver transplantation in New Zealand. The number of people needing liver transplantations is projected to treble by 2030.
- In the Bay of Plenty, approximately 2,525 people are living with hepatitis C.

What are the risk factors for hepatitis C?

Those at risk of hepatitis C are people who:

- Have ever injected drugs (once is enough);
- Have ever received a tattoo or body piercing using unsterile equipment;
- Had a blood transfusion prior to 1992 (in NZ);
- Have ever lived or received medical treatment in a high risk country (South East Asia, China, Eastern Europe (including Russia), or the Middle East);
- Have ever been in prison;
- Were born to a mother living with hepatitis C.

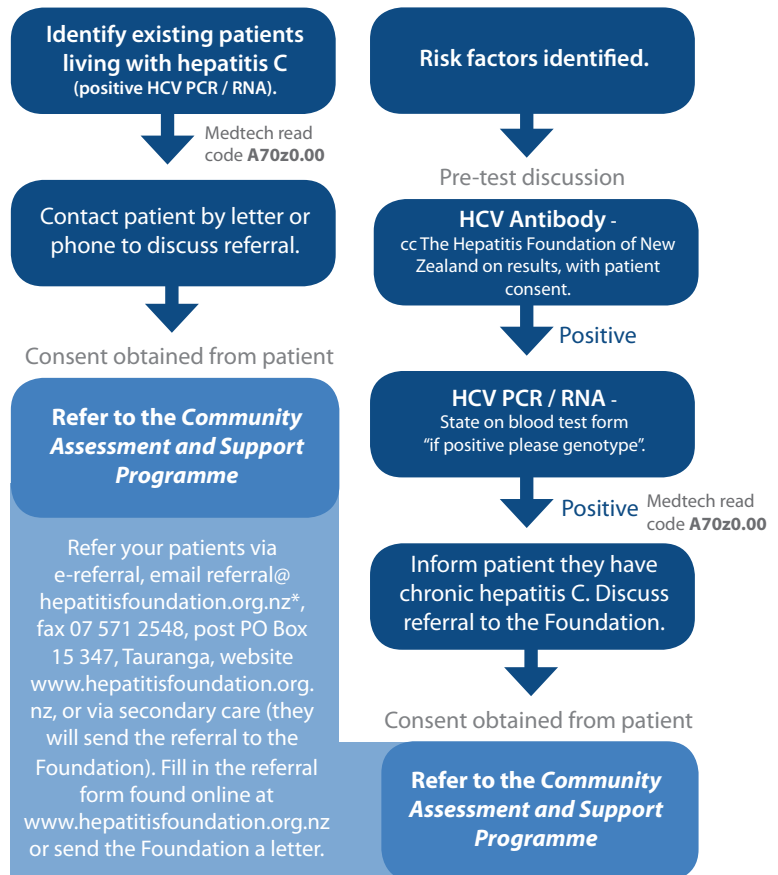
About the Hepatitis C Pilot:

- The *Hepatitis C Pilot* is now operating in your area. This innovative programme aims to address hepatitis C by increasing the number of people diagnosed, assessed, treated, and offered support.
- The pilot is run by The Hepatitis Foundation of New Zealand in partnership with the Ministry of Health, and Bay of Plenty DHB, and is supported by Pathlab.
- Central to the pilot, is the free hepatitis C *Community Assessment and Support Programme* for patients. A community hepatitis C nurse will provide enrolled patients with an initial FibroScan® assessment (ultrasound of the liver), blood tests, on-going support, and education, and will liaise with health providers to centrally manage patient needs.

Referral process:

How to refer patients to the *Community Assessment and Support Programme*?

There are two referral pathways: a pathway for those already diagnosed with HCV, and a pathway for those not yet diagnosed.



* Please note: Compliance with the *Health Information Privacy Code 1994*, local DHB requirements (such as encryption), and patient consent, is required when sending patient information by email.

For more information:

- Visit www.hepatitisfoundation.org.nz;
- Go to Bay Navigator;
- Call 0800 33 20 10.

Hepatitis C. Know it. Test it. Treat it.



| www.hepatitisfoundation.org.nz | 0800 33 20 10

